

Waste Vent Requirements

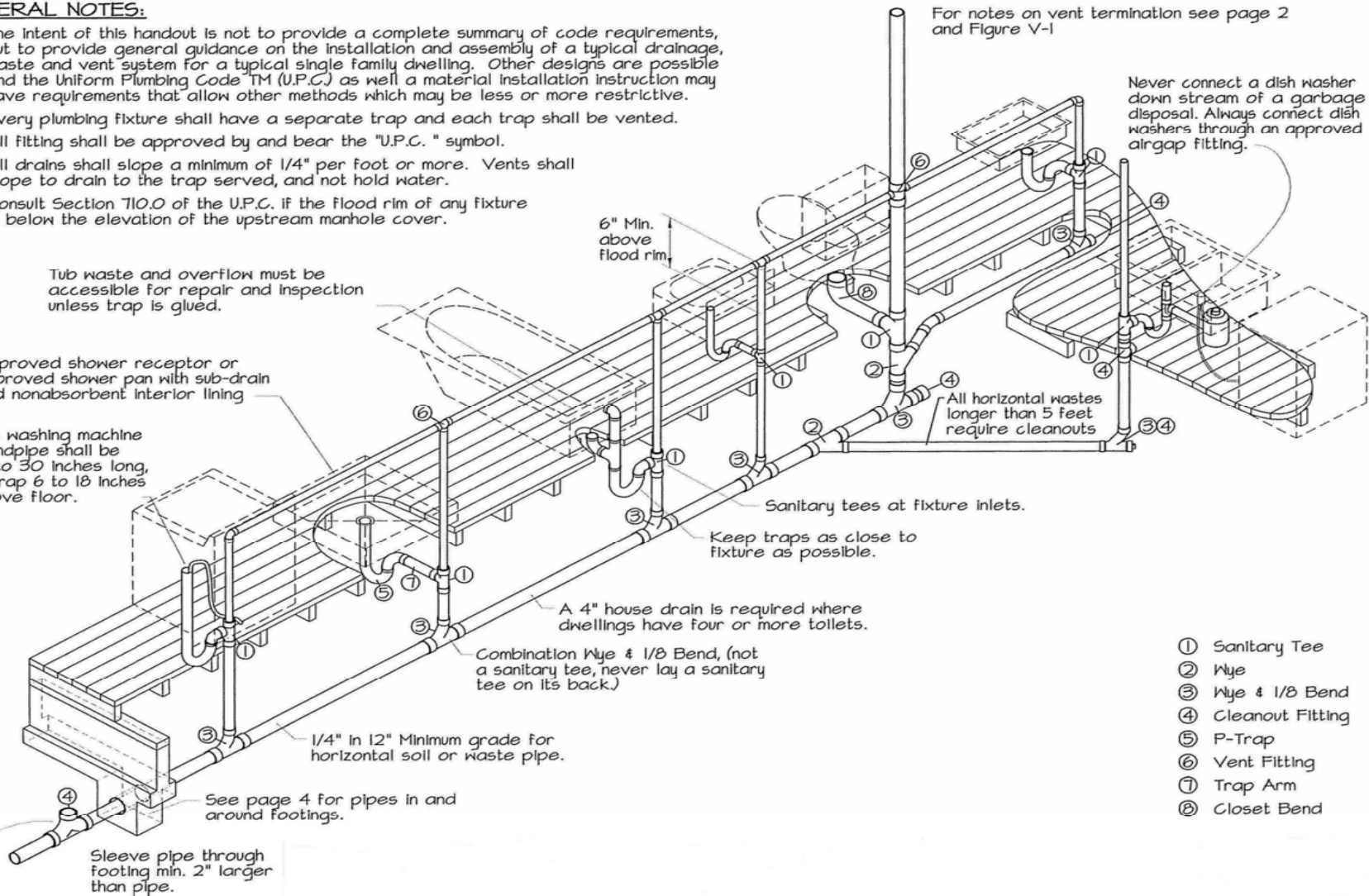
GENERAL NOTES:

- The intent of this handout is not to provide a complete summary of code requirements, but to provide general guidance on the installation and assembly of a typical drainage, waste and vent system for a typical single family dwelling. Other designs are possible and the Uniform Plumbing Code™ (U.P.C.) as well as a material installation instruction may have requirements that allow other methods which may be less or more restrictive.
- Every plumbing fixture shall have a separate trap and each trap shall be vented.
- All fitting shall be approved by and bear the "U.P.C." symbol.
- All drains shall slope a minimum of 1/4" per foot or more. Vents shall slope to drain to the trap served, and not hold water.
- Consult Section 710.0 of the U.P.C. if the flood rim of any fixture is below the elevation of the upstream manhole cover.

Tub waste and overflow must be accessible for repair and inspection unless trap is glued.

Approved shower receptor or approved shower pan with sub-drain and nonabsorbent interior lining

The washing machine standpipe shall be 18 to 30 inches long, P-Trap 6 to 18 inches above floor.



For notes on vent termination see page 2 and Figure V-1

Never connect a dish washer down stream of a garbage disposal. Always connect dish washers through an approved airgap fitting.

All horizontal wastes longer than 5 feet require cleanouts

Sanitary tees at fixture inlets.

Keep traps as close to fixture as possible.

A 4" house drain is required where dwellings have four or more toilets.

Combination Wye & 1/8 Bend, (not a sanitary tee, never lay a sanitary tee on its back.)

1/4" in 12" Minimum grade for horizontal soil or waste pipe.

See page 4 for pipes in and around footings.

Sleeve pipe through footing min. 2" larger than pipe.

Cleanouts shall be of the same material as the house drain and shall be located a minimum of 24" out from the foundation.

- ① Sanitary Tee
- ② Wye
- ③ Wye & 1/8 Bend
- ④ Cleanout Fitting
- ⑤ P-Trap
- ⑥ Vent Fitting
- ⑦ Trap Arm
- ⑧ Closet Bend

USE OF FITTING NOTES:

1. Vertical drainage lines connecting with horizontal drainage lines shall enter through 45 degree wye branches, combination wye and 1/8 bend branches, or other approved fittings of equivalent sweep.
2. Horizontal drainage lines connecting with other horizontal drainage lines shall enter through 45 degree wye branches, combination wye and 1/8 bend branches, or other approved fittings of equivalent sweep.
3. Horizontal drainage lines, connecting with a vertical stack, shall enter through 45 degree wye branches, 60 degree wye branches, combination wye and 1/8 bend branches, sanitary tee branches, or other approved fittings of equivalent sweep.

Fitting	Vert. to Horiz.	Horiz. to Horiz.	Horiz. to Vert.
45 Wye	X	X	X
60 Wye			X
Combination Wye & 1/8 Bend or Long Sweep Tee	X	X	X
Sanitary-Tee			X
Long Sweep (1/4 Bend)	X	X	X
Short Sweep (1/4 Bend)			X
1/8 Bend	X	X	X
1/6 Bend	X		X

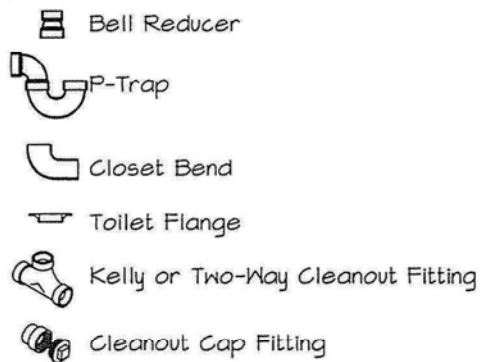
(Horiz. - Horizontal Drainage Piping Vert. - Vertical Drainage Piping)

VENT FITTINGS:

Vent fitting have little to no sweep and cannot be used in a drain.



OTHER FITTINGS



CLEANOUT NOTES:

1. Cleanouts Required:
 - Each horizontal line at its upper terminal;
 - Each run of piping more than 100 feet shall have a cleanout spaced at no more than 100 ft. intervals;
 - All sinks and urinals; and
 - Horizontal change exceeding 135 degrees.

EXCEPTIONS:

- Horizontal line less than 5 ft except sinks and urinals;
- on pipes sloping less than 72 degrees from vertical;
- except building drain and branches, piping above the first floor; and
- two way cleanouts stubbed for upper end cleanout.

2. Provide 18" min. clearance in front of cleanout. Cleanouts shall be accessible and above ground within 20' of a crawl hole. Cleanouts shall be of the same material as the house drain and shall be located a minimum of 24" out from the foundation.

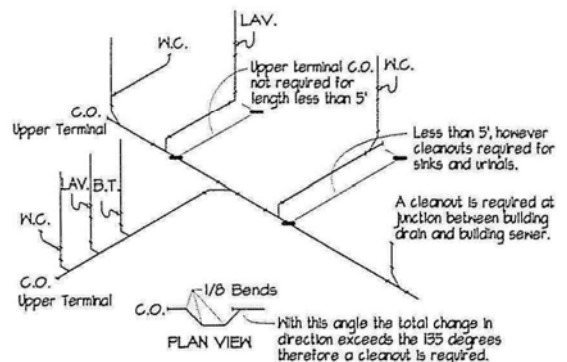


Figure C-1 TYPICAL CLEANOUT LOCATIONS