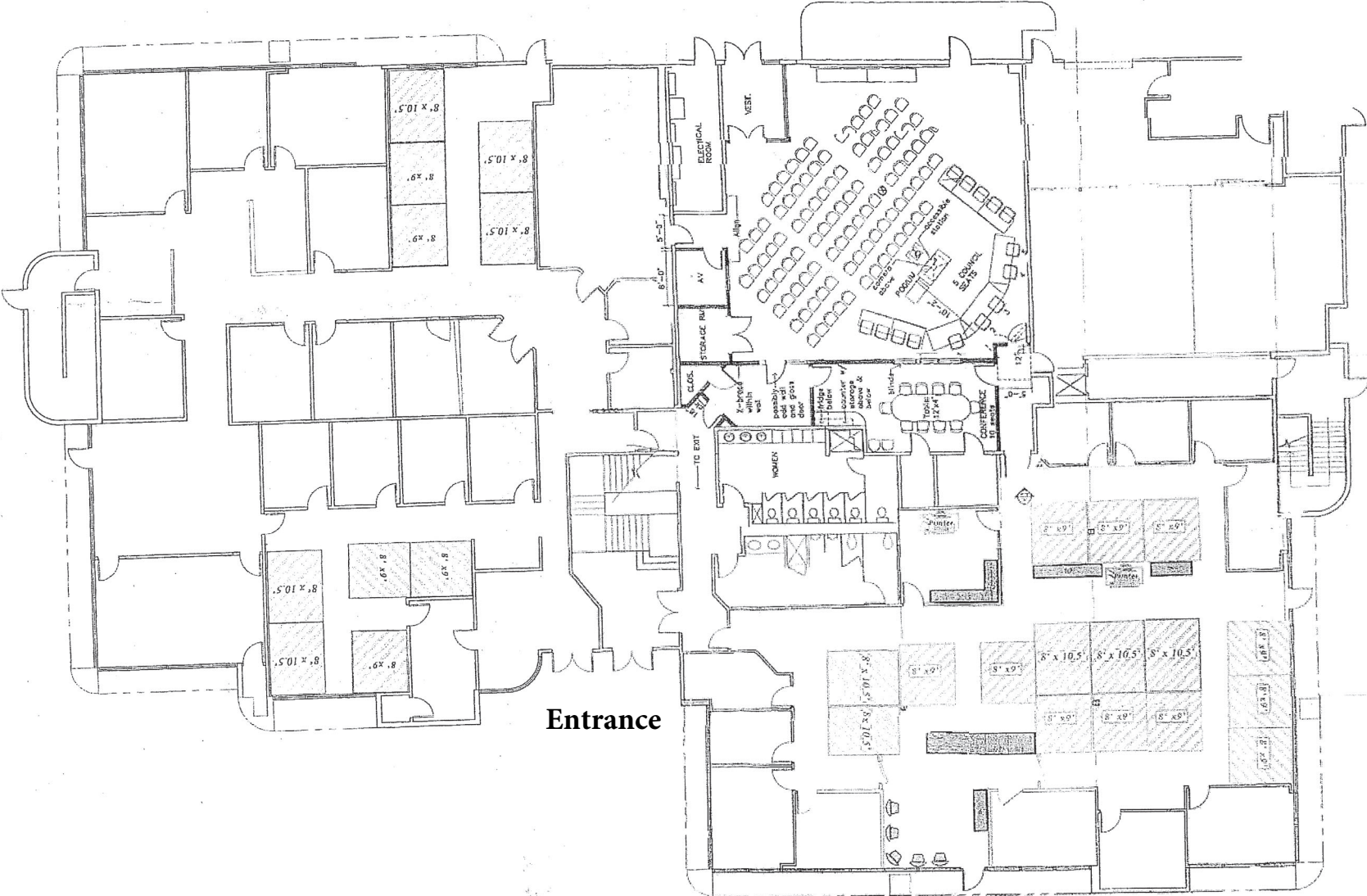


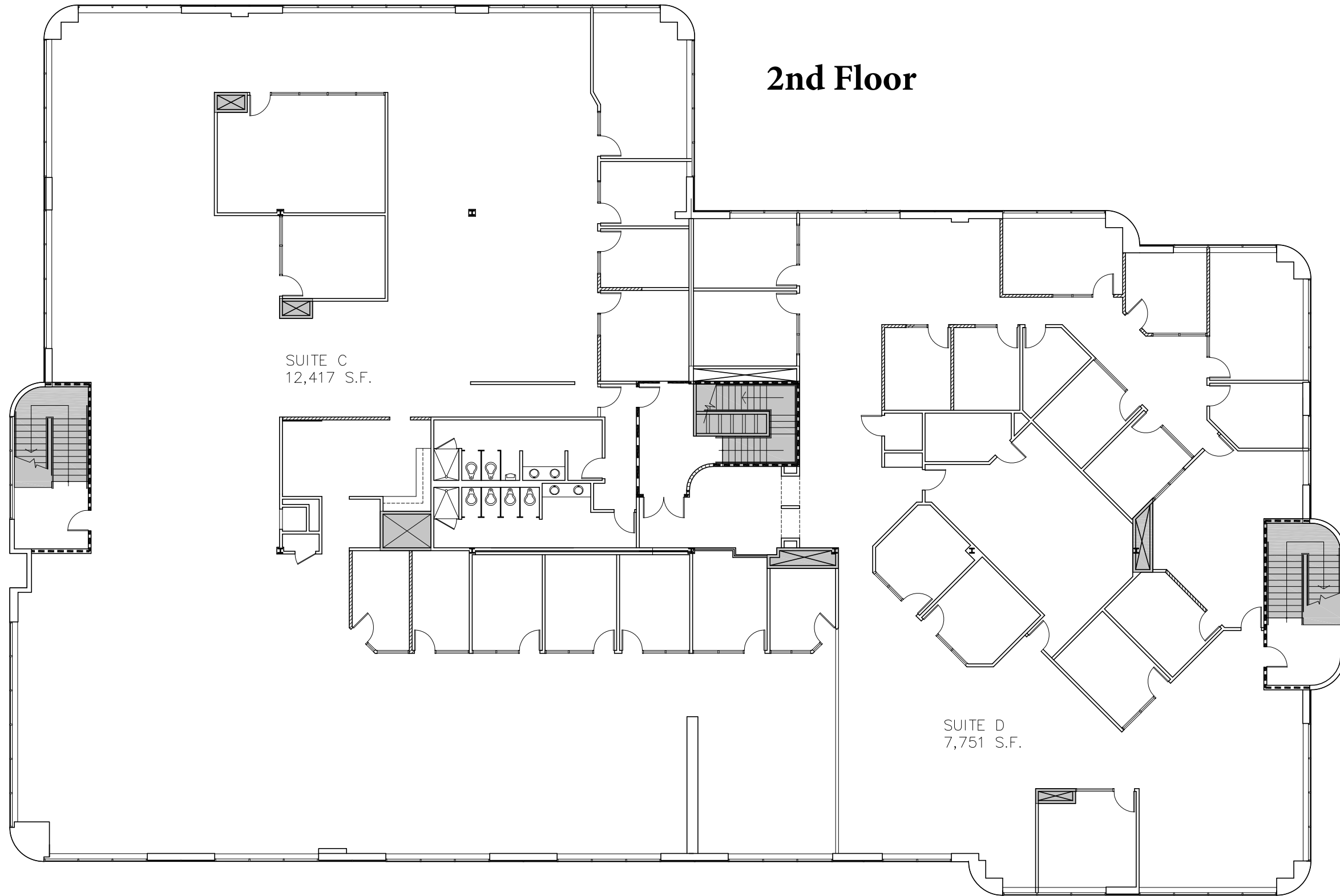
City Hall Floor Plans

1st Floor



Entrance

2nd Floor



SUITE C
12,417 S.F.

SUITE D
7,751 S.F.

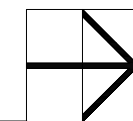
Suite C
12,417 square footage
906 pro rata share of common area (61.6%)
13,323 total square footage Area A

Suite D
7,751 square footage
564 pro rata share of common area (38.4%)
8,315 total square footage Area B

21,638 Total Gross Square Footage

PARTITION PLAN

SCALE: 1/8" = 1'-0"



NORTH