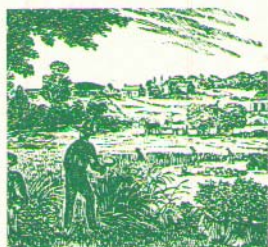


The Center for  
Urban Agriculture at  
**FAIRVIEW  
GARDENS**



Michael Ableman  
*Founder and Executive  
Director Emeritus*

**Board of Directors**  
Cynthia Brock  
Andrew & Adrienne Davis  
Matt Dobbertein  
Selma Rubin  
Gebb Turpin

**National  
Advisory Board**  
Wendell Berry  
Yvon Chouinard  
Wes Jackson  
Russell Petersen  
Anthony Rodale  
Alice Waters  
*Emeritus*  
David Brower

**Staff**  
John Buttny  
*Executive Director*

Toby McPartland  
*Farm Manager*

Matthew Logan  
*Administrative Director*

Sunshine Caulfield  
*Marketing Director*

Tiffany Cooper  
*Education Program Director*

Kelly McConihe  
*Assistant Produce Stand Manager*

Salvador Gomez-Ochoa  
Cesar Gomez Madrigal  
Javier Gomez-Ochoa  
Manuel Gomez-Ochoa  
Jorge Flores  
Daniel Salgado  
Efrain Padilla  
*Field Crew*

598 N. Fairview Avenue  
Goleta, CA 93117  
*Mailing address:*  
PO Box 396  
Goleta, CA 93116  
Phone (805) 967-7369  
Fax (805) 967-0188  
E-mail:  
info@fairviewgardens.org  
www.fairviewgardens.org

June 1, 2010

Scott Kolwitz, Senior Planner  
City of Goleta- Community Development Department  
130 Cremona Drive  
Goleta, CA 93117

Re: Fairview Gardens May Progress Report

Dear Scott:

The following is our May 2010 Progress Report for the Fairview Gardens CUP.

This month has flown by as summer is upon us! We are into our next steps of our strategic planning process, and hope to have our discovery phase completed by late June. This will then give our team time to digest our data and develop meaningful strategies for forward movement.

We are beginning to build our fundraising efforts and have scheduled a donor appreciation reception in early July. This is the beginning of our efforts to fundraise for phase 5.

Our spring appeal will be mailed out in late June. We will use these funds for our current operations, but we will also be using the mailing as a communication with our constituents to move our fundraising goals forward.

Our fundraising calendar is almost complete and we will be writing grants for the fall fundraising cycle of our local foundations. We are actively pursuing national fundraising opportunities as well as local ones, and hope that by this fall we will have established some relationships with funders.

Phase 5 is the only phase that remains to be completed. A detailed progress report for Phase 5 and fundraising follows:

**Phase 5**

Architect Dennis Thompson created a design concept for the Phase 5 permanent housing project. This was submitted to DRB on January 27, 2009 and received Conceptual Review. The project is off the DRB's calendar until such time that the Fairview Gardens has raised enough funds to move Phase 5 forward within a reasonable timeline. The Farm will consider a return to the DRB for review once we have finished our strategic planning process and have begun to implement our donor program.

On May 24<sup>th</sup> we went before the City of Goleta Planning Commission and were found to be in compliance for our Commercial Poultry Operation CUP (03-159-CUP) and our Farm Labor Camp CUP (08-111-CUP).

Total Fundraising Accomplishments since C.U.P. issuance (7/1/08):

Beginning balance	\$3,382.74
Total Funds Raised to Date for Phases 1 - 5:	\$332,677.24
Total Funds Expended to Date for Phases 1 - 5:	\$332,677.24
Total Funds Available for Phase 5 Completion:	\$3,382.74
Total Estimated Cost for Phase 5 Completion:	\$2,500,000.00
Total Funds Needed for Phase 5 Completion:	\$2,496,617.26

We will be developing our new board member criteria over the next month and our recruitment of new board members will start immediately after this criterion is adopted.

#### In-Kind Contributions

- Suzanne Elledge Planning and Permitting Services (Planning Services)
- Thompson Naylor Architects (Architectural Services, Discounted Rate)
- Victor Schumacher (Architectural Services)
- Allen Associates (Project Management, Potential Builders, Discounted Rate)
- Penfield and Smith (Survey and Engineering Services)
- Wilson Environmental Landscape Design (Landscape Design)
- Phillip Seymour (Legal Counsel)
- Dennis Elledge (Building Contractor / Project Management)
- Matt Dobberteen (Planning Fees)
- Marborg Industries (Waste Management, Discounted Service)
- Hayward Lumber (Materials Donation/Discount)
- Harriet Eckstein (Graphic Design)
- Martin Camp (Carpentry and Construction)
- Mr. Pink the Computer Shrink (Technical support)

As always, the farm board and management are meeting regularly to work on strategizing and fundraising for the remaining Phase Five. Please feel free to contact me with any questions.

Thank you,  
Mark Tollefson  
Executive Director  
The Center for Urban Agriculture  
at Fairview Gardens  
805-967-7369  
mark@fairviewgardens.org